

FILED FOR RECORD
 MARTIN COUNTY, FLA.
 81 MAY 20 P 1: 33
 LOUISE V. SAACS
 CLERK OF CIRCUIT COURT
 BY _____ D.C.

ACCEPTED FOR FILES AND RECORDED IN
 THE PUBLIC RECORDS OF MARTIN COUNTY,
 FLORIDA THIS 22ND DAY OF MAY, A.D. 1982
 IN PLAT BOOK 8 PAGE 65.
 Louise V. Saacs
 CLERK OF CIRCUIT COURT OF MARTIN COUNTY, FLORIDA
 By Charles Burley D.C. File # 410 666

SURVEYORS CERTIFICATE
 THE ABOVE PLATTED RIGHT OF WAY REPRESENTS
 A SURVEY CONDUCTED UNDER MY DIRECTION
 AND IS A TRUE REFLECTION OF WHAT WAS
 FOUND AS EXISTING LAID OUT AND IN USE
 ON MARCH 22, 1981.
 David M. Brown
 DAVID BROWN, A.L.S.
 MARTIN COUNTY SURVEYOR
 REG. CERT. # 322

POINT	FROM	TO R/W
A	32'	29'
B	27'	29'
C	24'	29'
D	24'	29'
E	24.5'	29'
F	24.5'	30'
G	27.5'	30'
H	32.5'	31'
I	32.5'	28.5'
J	27.5'	32.5'

SCALE 1" = 40'

MAPP RD MAINTENANCE R/W MAP

SE 1/4 SEC 7 T 285 R 41 E

AFFIDAVIT

STATE OF FLORIDA
 COUNTY OF MARTIN

BEFORE ME, THE UNDERSIGNED AUTHORITY, DULY AUTHORIZED IN THE STATE
 AND COUNTY AFORESAID TO ADMINISTER OATHS AND TAKE ACKNOWLEDGMENTS,
 PERSONALLY APPEARED C. E. RAHLERSON AS ROAD SUPERINTENDENT, WHO, AFTER
 BEING DULY SWORN, DEPOSED AND SAYS ON OATH AS FOLLOWS:

1) I, THE UNDERSIGNED, BEING COUNTY ROAD SUPERINTENDENT OF MARTIN COUNTY,
 FLORIDA, AND AS SUCH A DULY QUALIFIED EMPLOYEE OF SAID MARTIN COUNTY,
 DO AVER THAT I AM THOROUGHLY FAMILIAR WITH ALL OF THE ROADS IN MARTIN
 COUNTY, FLORIDA AND WITH THE PROGRAM OF MAINTENANCE AND IMPROVEMENT
 THEREOF THAT I HAVE BEEN ASSOCIATED IN PRESENT OR SIMILAR CAPACITY ON
 ROAD PROGRAMS IN SAID COUNTY FOR A PERIOD IN EXCESS OF 22 YEARS.

2) THAT TO MY PERSONAL KNOWLEDGE AND OBSERVATION, THE ROAD KNOWN AND
 DESCRIBED AS "MAPP ROAD" FROM POINT "A" TO POINT "J" ALL WITHIN MARTIN
 COUNTY AS LOCATED, AS SHOWN ON THE ABOVE MAP, WAS CONSTRUCTED BY
 AND HAS BEEN MAINTAINED AND REPAIRED CONTINUOUSLY AND UNINTERMITTENTLY
 FOR 22 YEARS BY THE MARTIN COUNTY ROAD AND BRIDGE DEPT. FURTHER THAT
 THE MAINTENANCE OF SAID PORTION OF "MAPP ROAD" CONSISTS OF MOWING,
 PERIODIC GRADING AND REPLACEMENT OF MARL BASE MATERIAL.

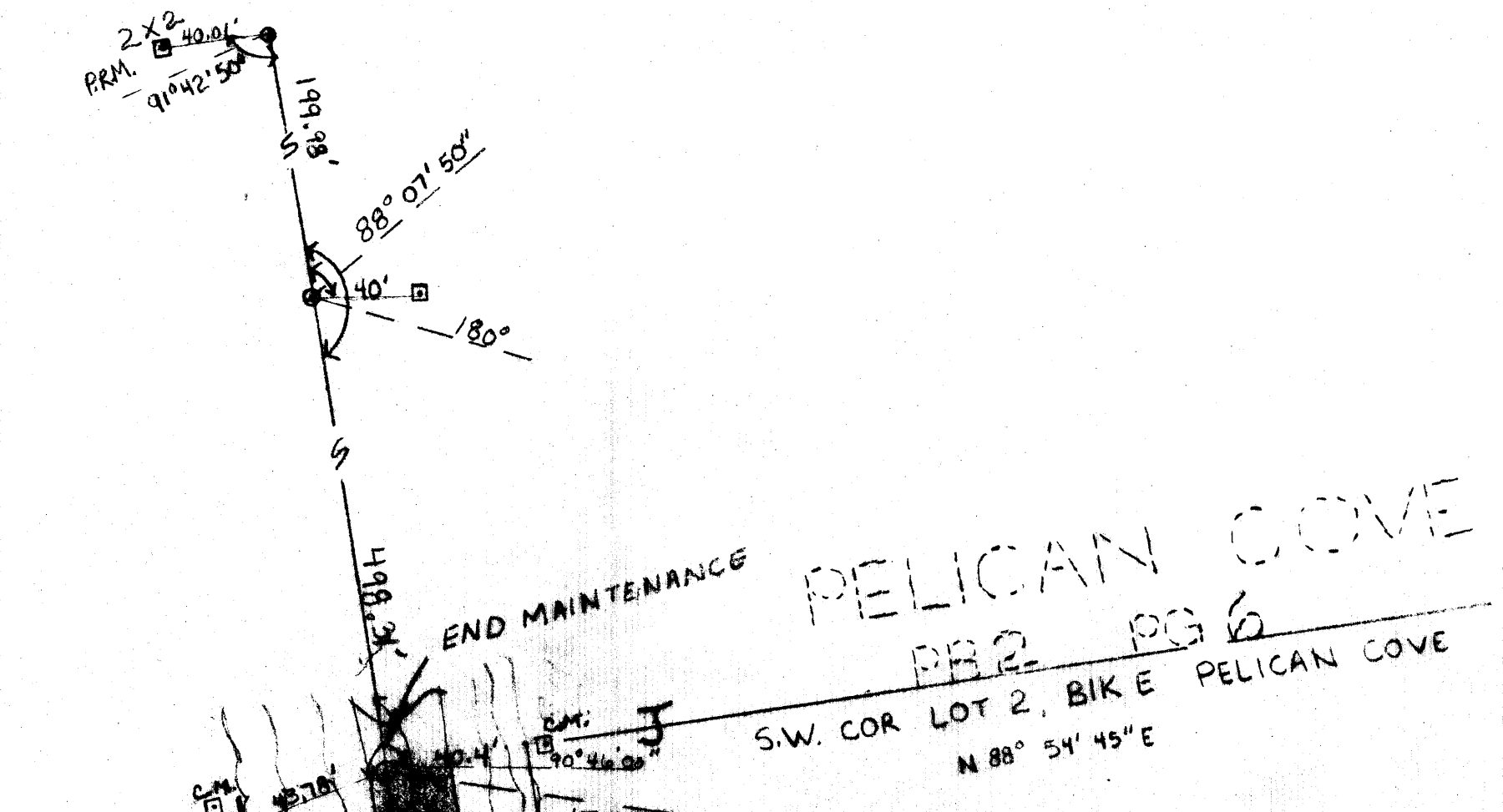
FURTHER AFFIANT SAYETH NOT
 THIS 12TH DAY OF MAY 1982.

C. E. Rahlerson
 ROAD SUPERINTENDENT

SWORN TO AND FORWARDED TO THE CLERK OF THE CIRCUIT COURT OF MARTIN COUNTY, FLORIDA, BY _____

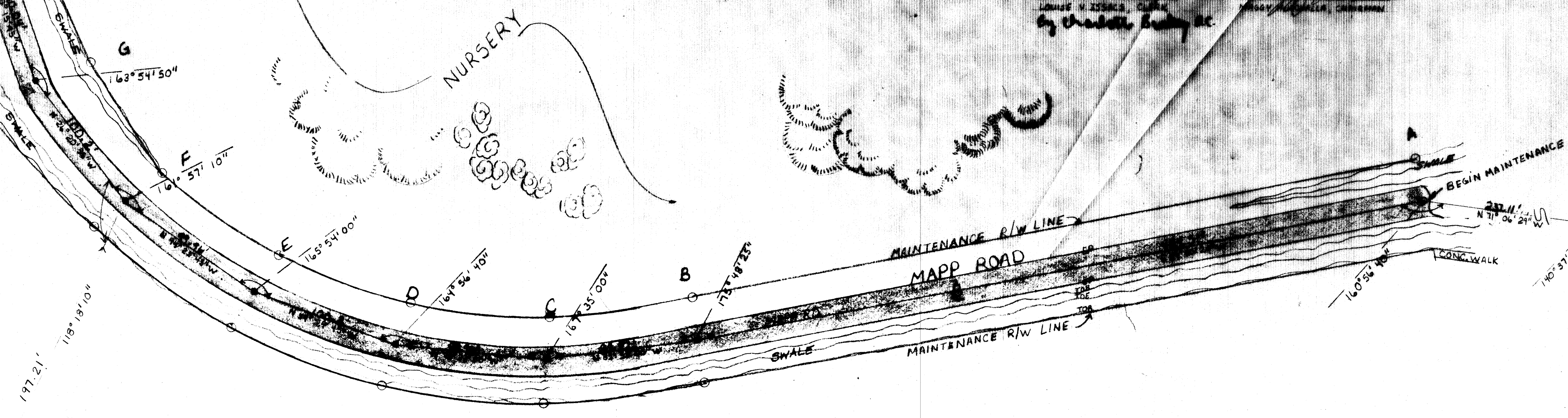
LOUISE V. SAACS
 CLERK OF CIRCUIT COURT

CERTIFIED BY: _____
 CLERK OF COUNTY COMMISSIONERS



LEGEND

- SET TACK
- PK NAIL
- FN CM



GULL HARBOR
 PBA PG 24

Martin County Engineering Dept.
 P.O. BOX 428 STUART, FLORIDA 34984

SCALE 1" = 40' APPROVED BY _____ DRAWN BY PJM
 DATE 3/23/81
 MAPP RD MAINTENANCE R/W LINE
 PTS. 3-12
 SHEET 1
 DRAWING NUMBER D-105M

